



Priority Road NW6

Parkheath  
*Sold on Service*





# Priory Road, NW6

## £850,000, Leasehold

### Camden Band D

- Spacious 2 bedroom 2 bathroom apartment
- Top floor of stunning semi-detached period house
- Access to beautiful communal garden
- 924 sq ft / 85.84 sq m
- South facing 24' open plan kitchen living room
- 16' master bedroom with en-suite shower room and garden views
- Further double bedroom
- 3 minute walk to West Hampstead transport links (Jubilee, Thameslink and Overground lines)
- Chain free
- \*Images digitally staged\*

Belsize Park  
208 Haverstock Hill  
NW3 2AG  
Sales 020 7431 1234  
Lettings 020 7431 3104  
nw3@parkheath.com

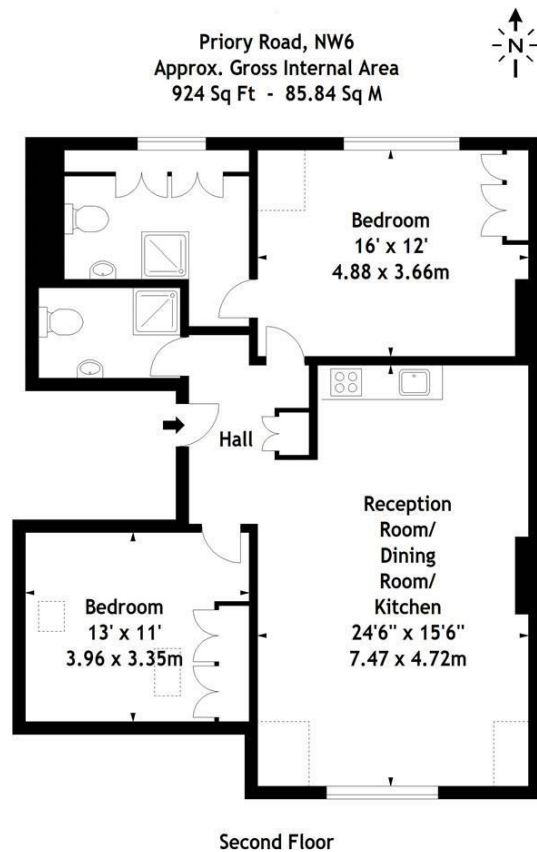
South Hampstead  
8a Canfield Gardens  
NW6 3BS  
Sales 020 7625 4567  
Lettings 020 7644 0800  
nw6@parkheath.com

West Hampstead  
192 West End Lane  
NW6 1SG  
Sales & Lettings  
Tel 020 7794 7111  
192@parkheath.com

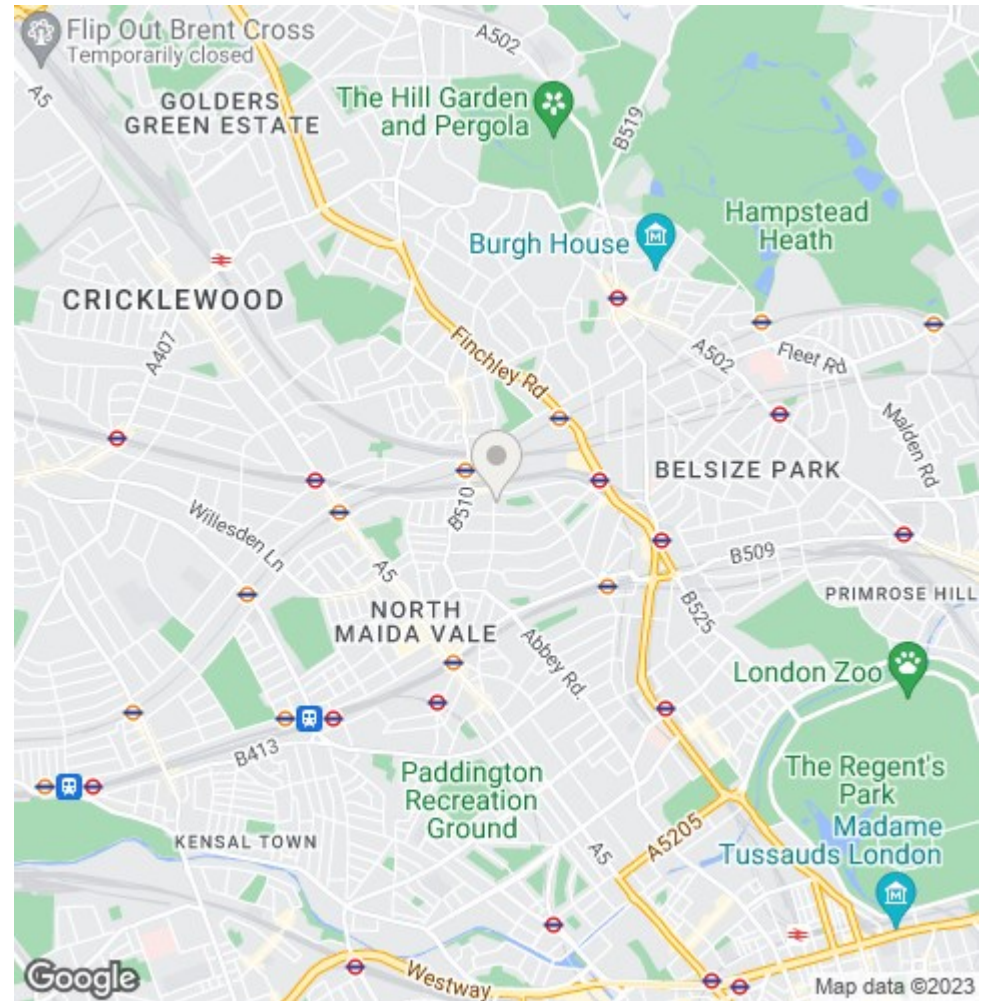
Kentish Town  
148 Kentish Town Rd  
NW1 9QB  
Tel 020 7485 0400  
kt@parkheath.com

Kensal Rise  
54-56 Chamberlayne Rd  
NW10 3JH  
Tel 020 8960 4845  
kensal@parkheath.com

Property Management  
148 Kentish Town Rd  
NW1 9QB  
020 7433 6174  
pm@parkheath.com



Measured in accordance with RICS guidelines. Every attempt is made to ensure accuracy, however all measurements are approximate. This floor plan is for illustrative purposes only and is not to scale.  
 © Datography Ltd 2014  
 Photographs \* Floorplans \* Virtual Tours  
 Tel: 0845 643 4401 www.datography.com



The particulars do not constitute part of an offer or contract. The particulars, including text, photographs and plans, are for the guidance only of prospective purchasers/tenants and must not be relied upon as statements of fact. The descriptions provided therein represent the opinion of the author and whilst given in good faith should not be construed as statements of fact. Nothing in these particulars shall be deemed a statement that the property is in good condition or otherwise or that any services or facilities are in good working order. All measurements are approximate